



Brian Sandoval
Governor



Richard Whitley
Director

State of Nevada
Department of Health and Human Services

Seclusion and Restraint

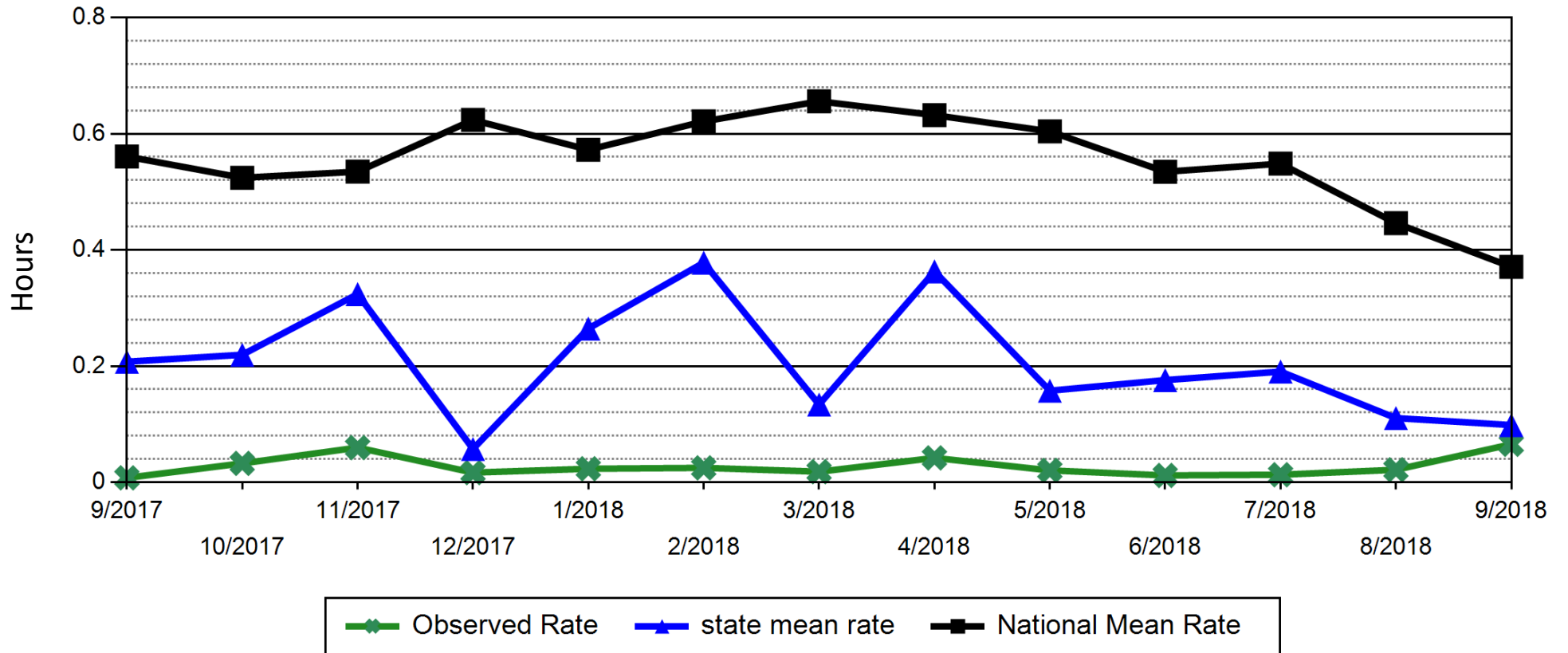
Division of Public and Behavioral Health: Clinical Services
Joanne Malay, MPH, RN
November 8, 2018





PHYSICAL RESTRAINT (NUMBER OF HOURS CLIENTS SPENT IN PHYSICAL RESTRAINT FOR EVERY 1000 HOURS), ADULTS

NNAMHS RESTRAINT DATA
(NRI-HBIPS COMPARATIVE REPORT 09/2018)

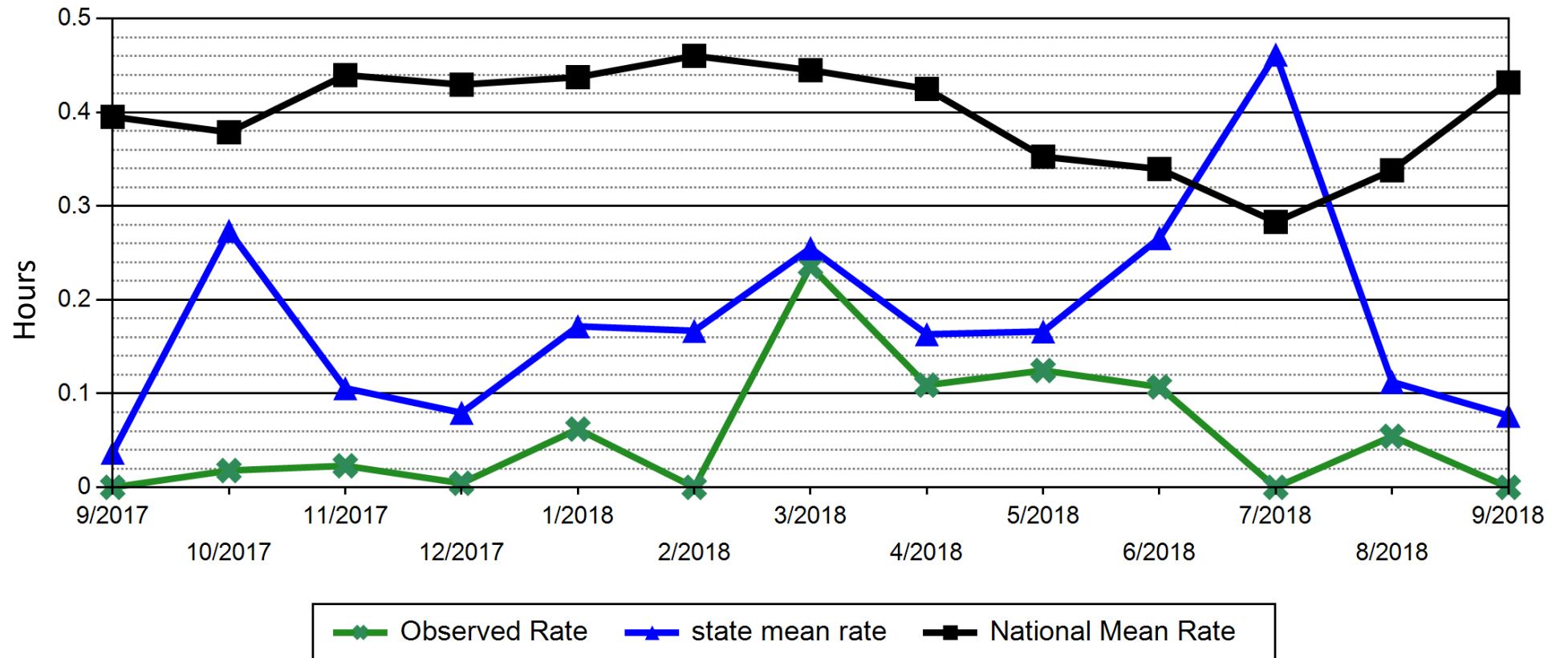




SECLUSION (NUMBER OF HOURS CLIENTS SPENT IN PHYSICAL RESTRAINT FOR EVERY 1000 PHYSICAL HOURS), ADULTS

NNAMHS SECLUSION DATA

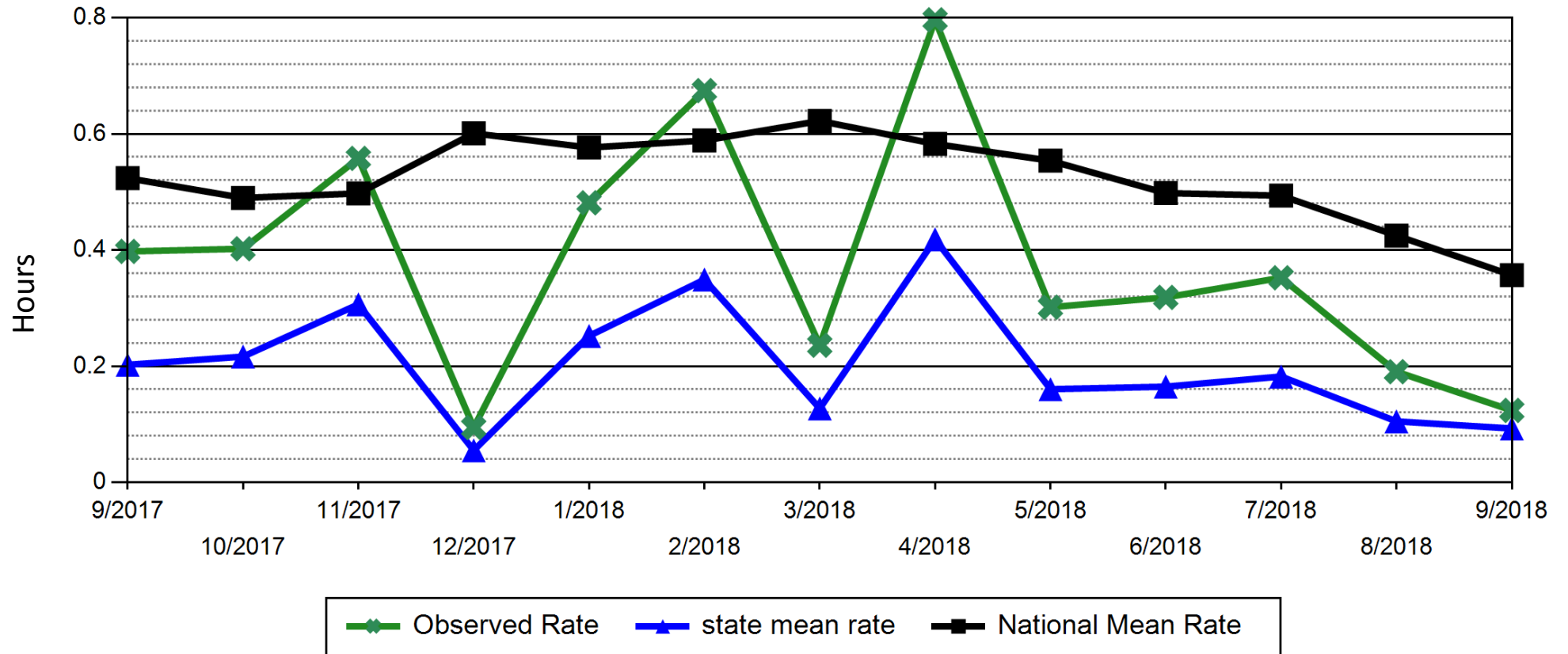
(NRI-HBIPS COMPARATIVE REPORT 09/2018)





PHYSICAL RESTRAINT (NUMBER OF HOURS CLIENTS SPENT IN PHYSICAL RESTRAINT FOR EVERY 1000 PHYSICAL HOURS), ADULTS

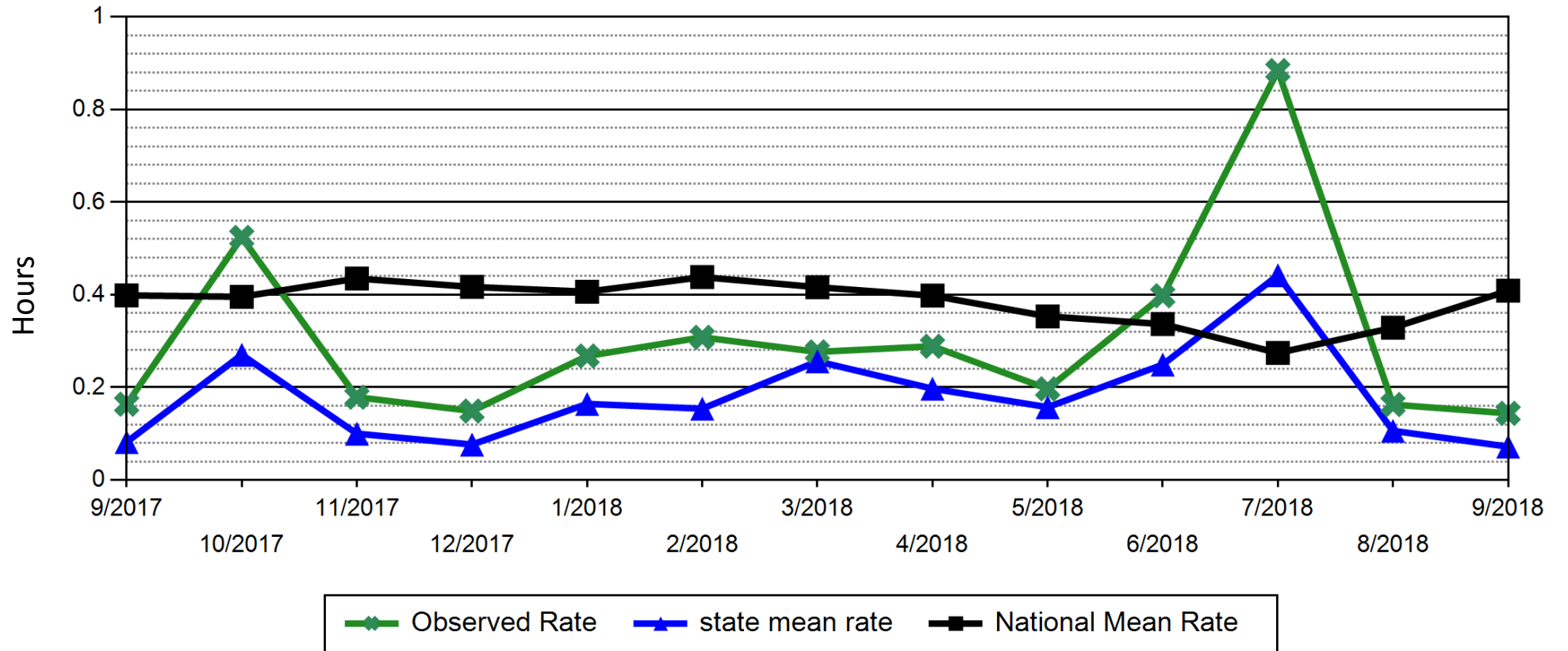
SNAMHS RESTRAINT DATA
(NRI-HBIPS COMPARATIVE REPORT 09/2018)





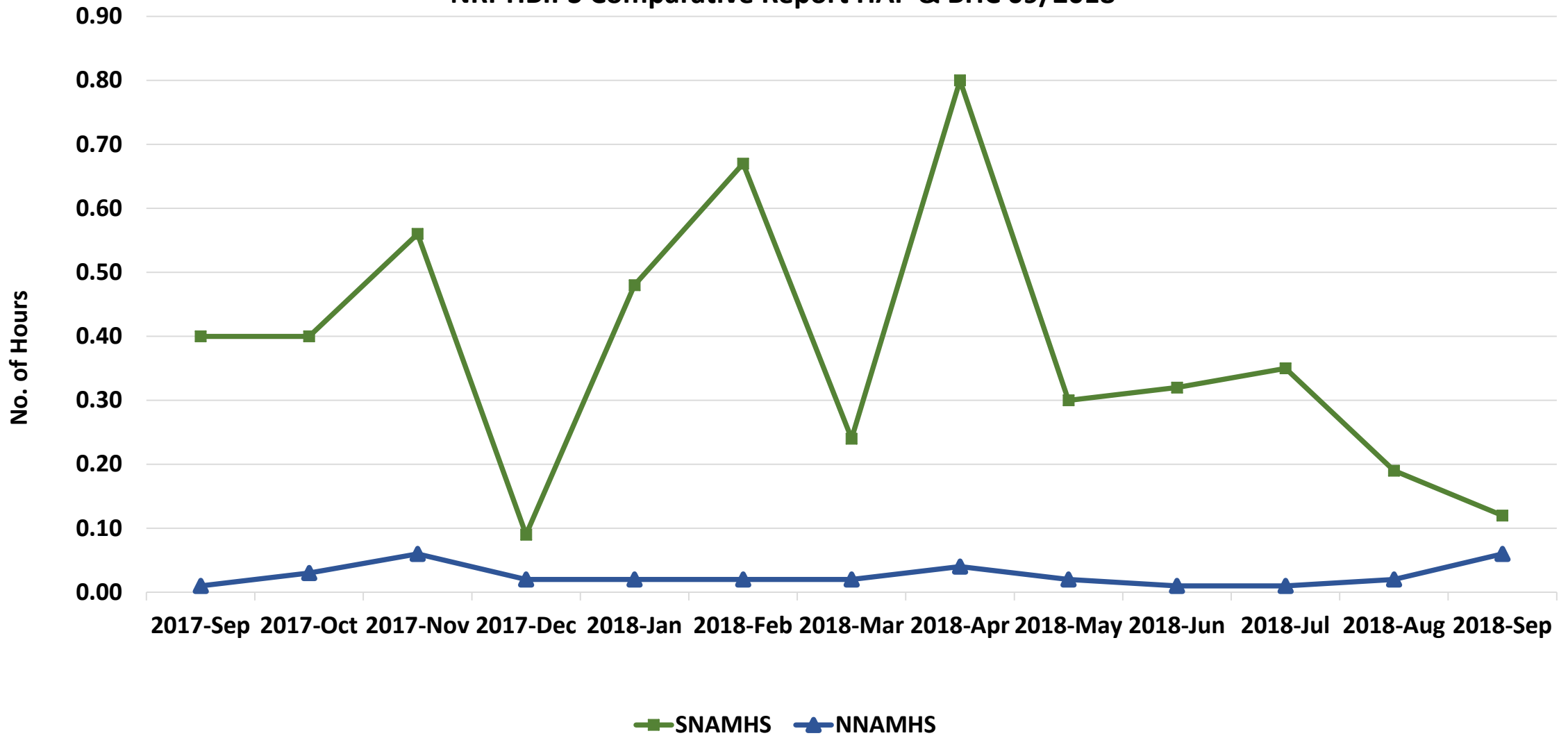
SECLUSION (NUMBER OF HOURS CLIENTS SPENT IN PHYSICAL RESTRAINT FOR EVERY 1000 PHYSICAL HOURS), ADULTS

SNAMHS SECLUSION DATA
(NRI-HBIPS COMPARATIVE REPORT 09/2018)





STATEWIDE
Overall Use of Restraints (# of hours clients spent for every 1000 hours)
NRI-HBIPS Comparative Report HAP & BHC 09/2018

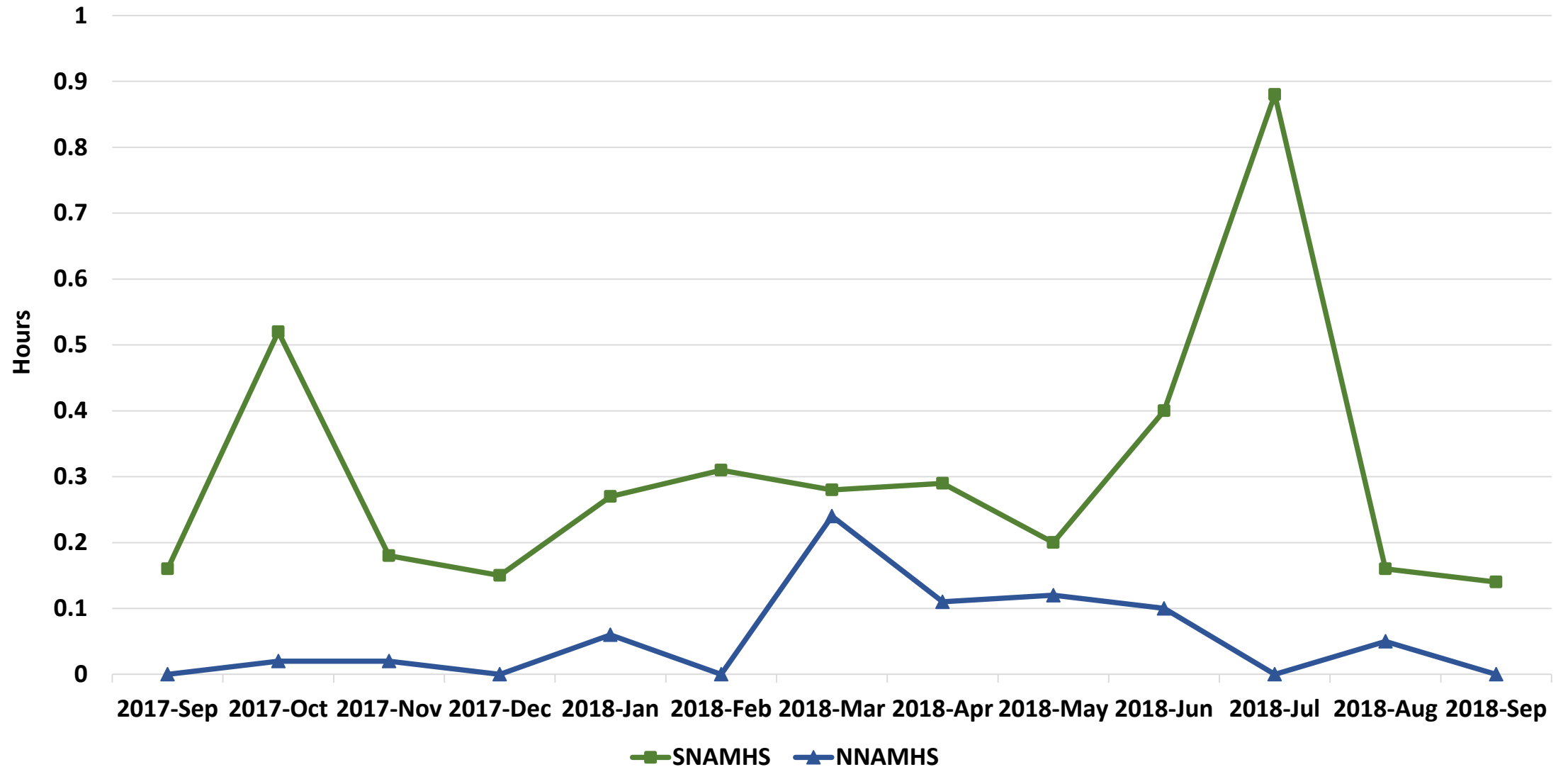




STATEWIDE

Overall Use of Seclusion (# of hours clients spent for every 1000 hours)

NRI-HBIPS Comparative Report HAP & BHC 09/2018



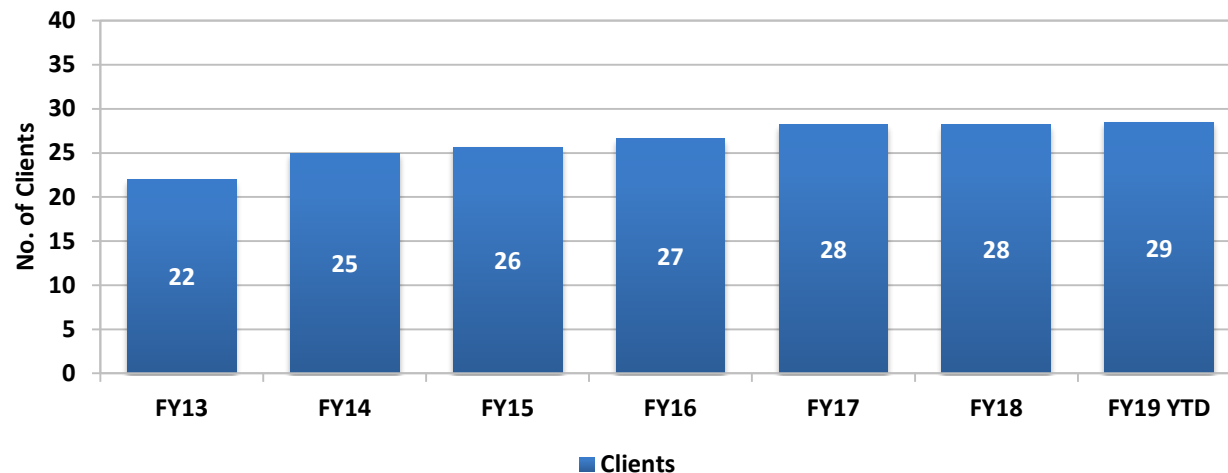


NNAMHS: DINI TOWNSEND HOSPITAL

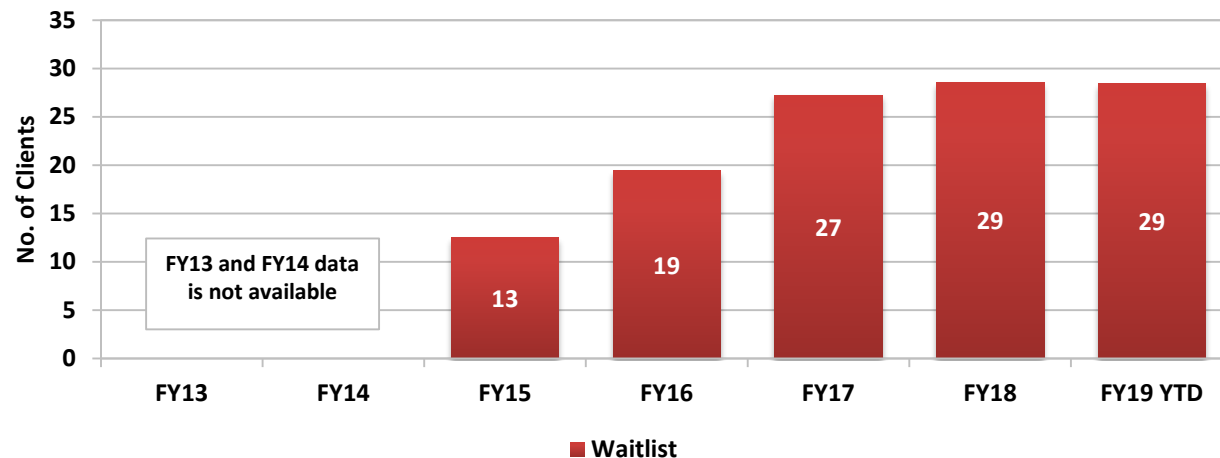
(DHHS Director's Office)

	Clients	Average Length of Stay (Days)	Waitlist
Jul-16	27	10	20
Aug-16	26	11	23
Sep-16	28	9	26
Oct-16	28	13	35
Nov-16	29	13	20
Dec-16	29	18	27
Jan-17	28	11	29
Feb-17	29	17	32
Mar-17	29	13	29
Apr-17	29	14	29
May-17	28	16	28
Jun-17	29	38	29
Jul-17	29	21	29
Aug-17	28	14	30
Sep-17	29	11	30
Oct-17	28	20	28
Nov-17	27	21	27
Dec-17	27	19	27
Jan-18	29	14	29
Feb-18	29	21	29
Mar-18	29	13	29
Apr-18	29	16	29
May-18	28	29	29
Jun-18	27	21	27
Jul-18	27	19	27
Aug-18	29	14	29
Sep-18	29	21	29
Oct-18	29	13	29

NNAMHS Dini-Townsend Hospital Clients - Fiscal Year Averages

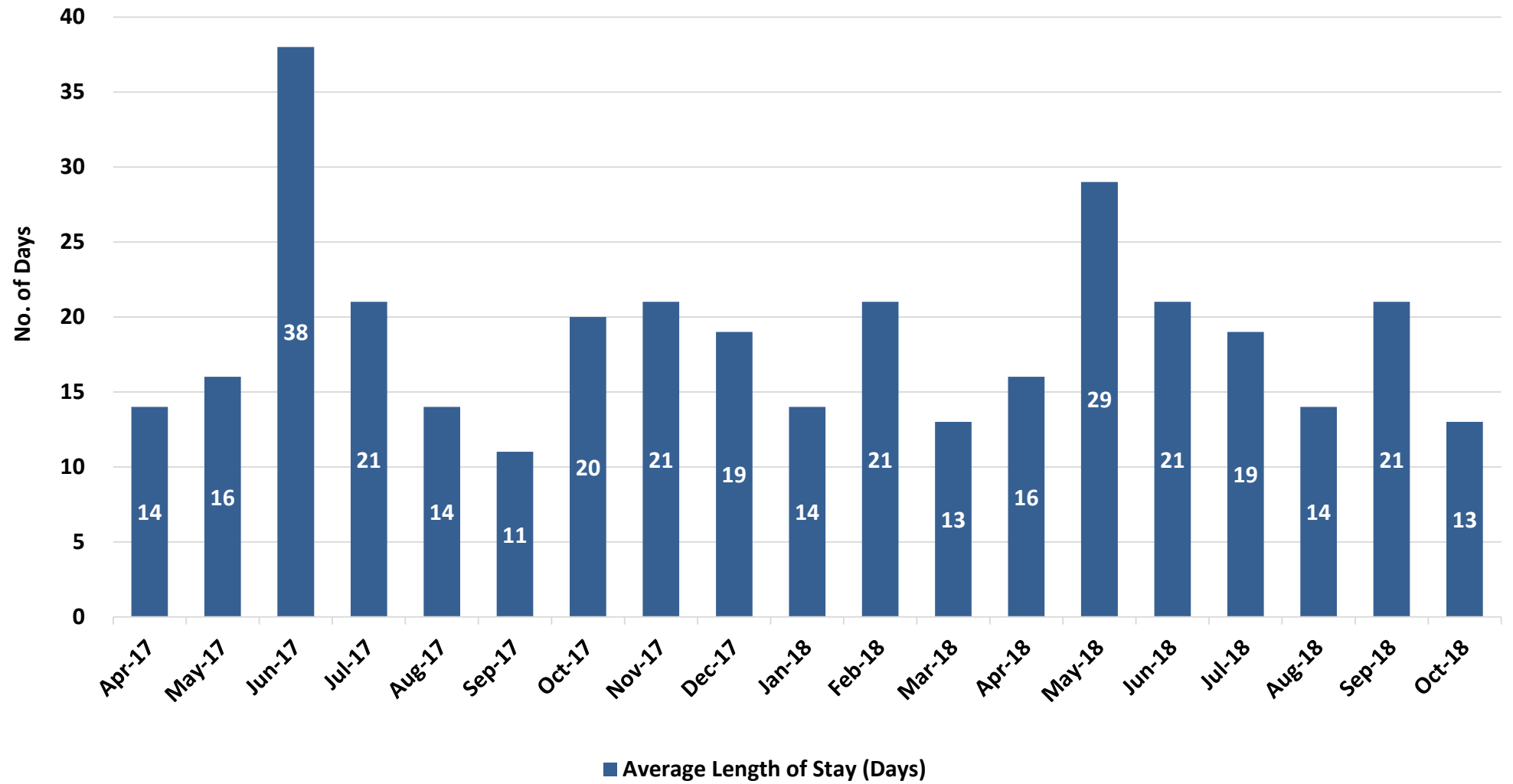


NNAMHS Dini-Townsend Hospital Waitlist - Fiscal Year Averages





NNAMHS Average Length of Stay (Days)



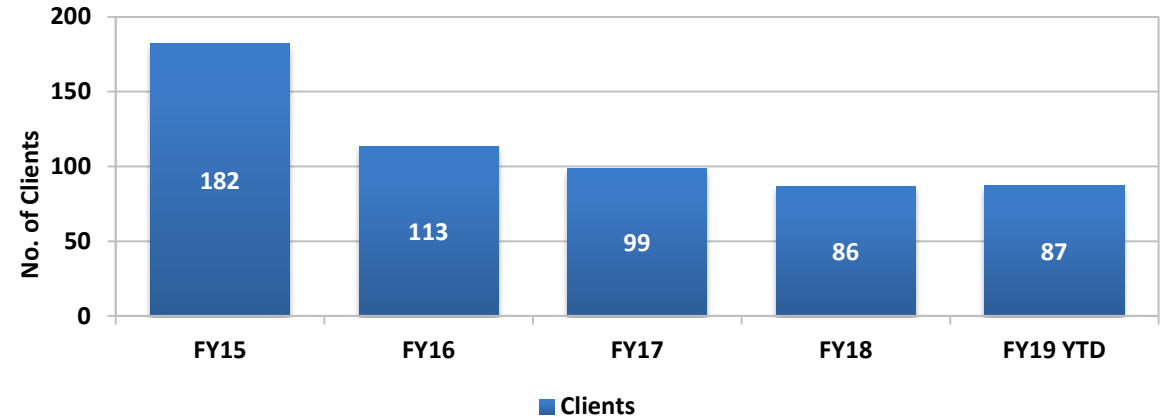


SNAMHS: RAWSON NEAL HOSPITAL

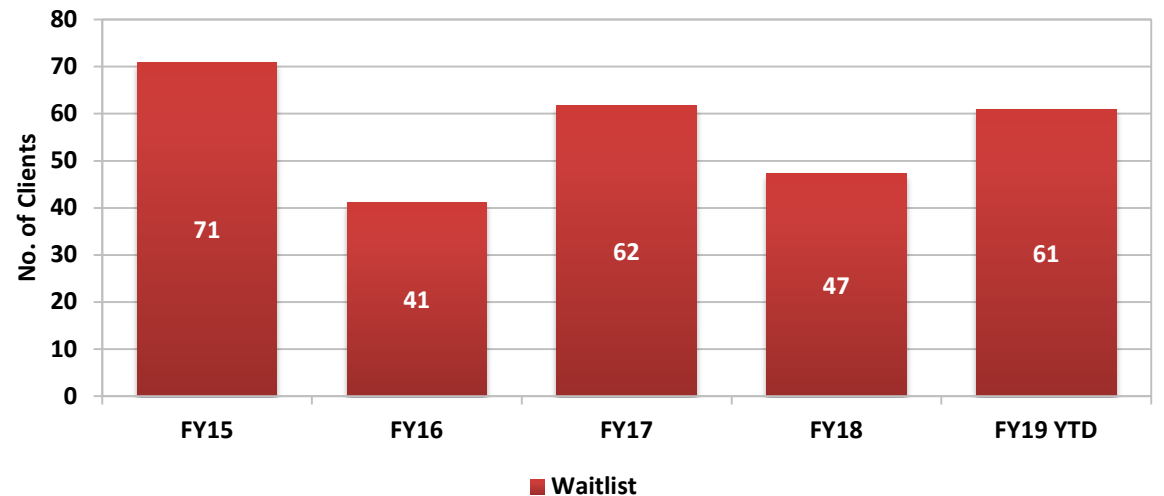
(DHHS Director's Office)

	Clients	Average Length of Stay (Days)	Waitlist
Jul-16	98	21	59
Aug-16	102	15	55
Sep-16	105	19	56
Oct-16	106	21	56
Nov-16	105	21	61
Dec-16	106	16	61
Jan-17	104	19	73
Feb-17	97	24	65
Mar-17	96	19	55
Apr-17	94	17	61
May-17	91	13	60
Jun-17	81	17	79
Jul-17	87	21	60
Aug-17	87	16	57
Sep-17	85	11	38
Oct-17	86	13	38
Nov-17	86	14	42
Dec-17	86	11	43
Jan-18	87	12	48
Feb-18	86	12	49
Mar-18	87	9	43
Apr-18	86	15	42
May-18	86	11	46
Jun-18	87	13	61
Jul-18	87	17	55
Aug-18	87	18	65
Sep-18	87	19	57
Oct-18	87	12	67

SNAMHS Rawson-Neal Hospital Clients - Fiscal Year Averages

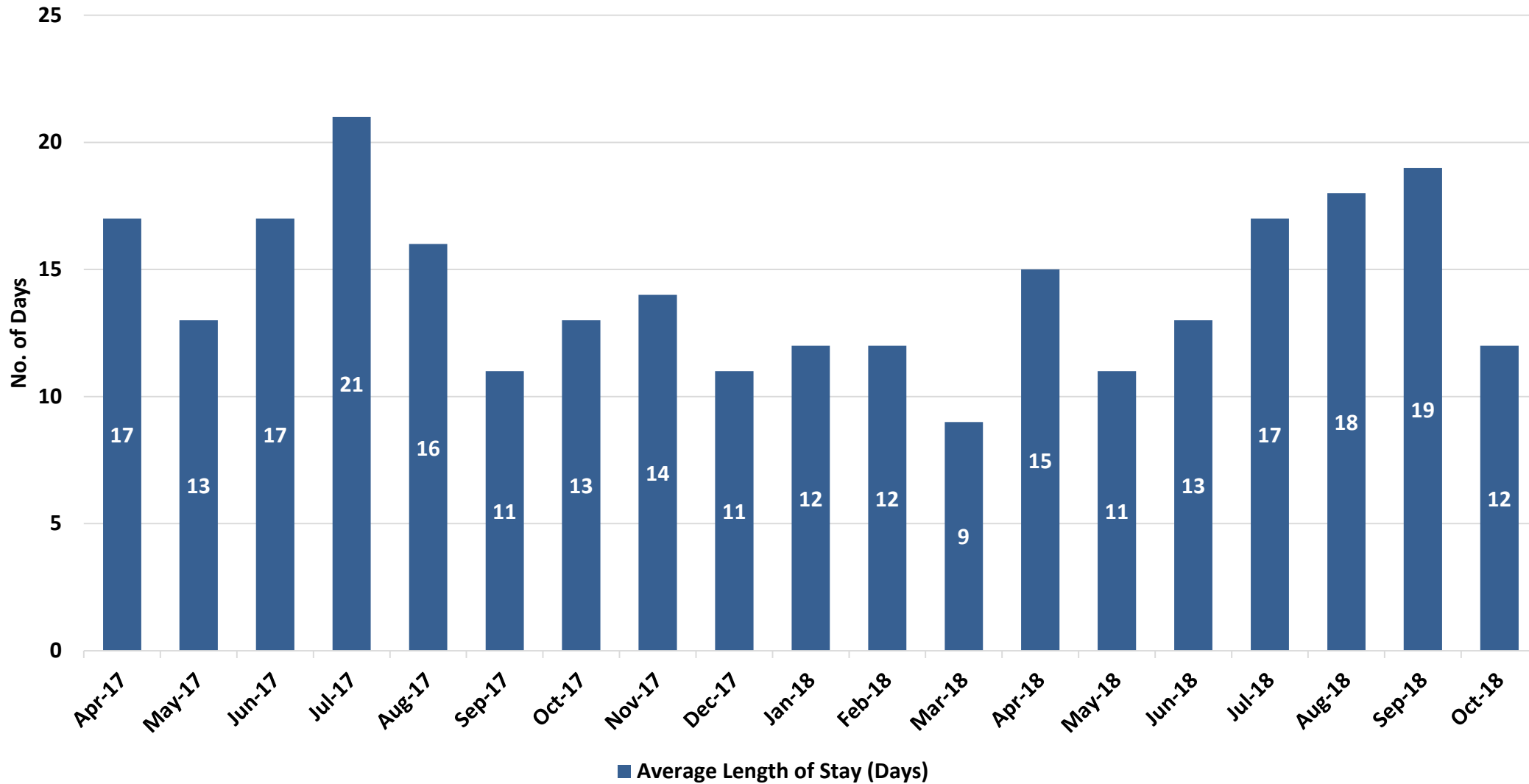


SNAMHS Rawson-Neal Hospital Waitlist - Fiscal Year Averages





SNAMHS Average Length of Stay (Days)





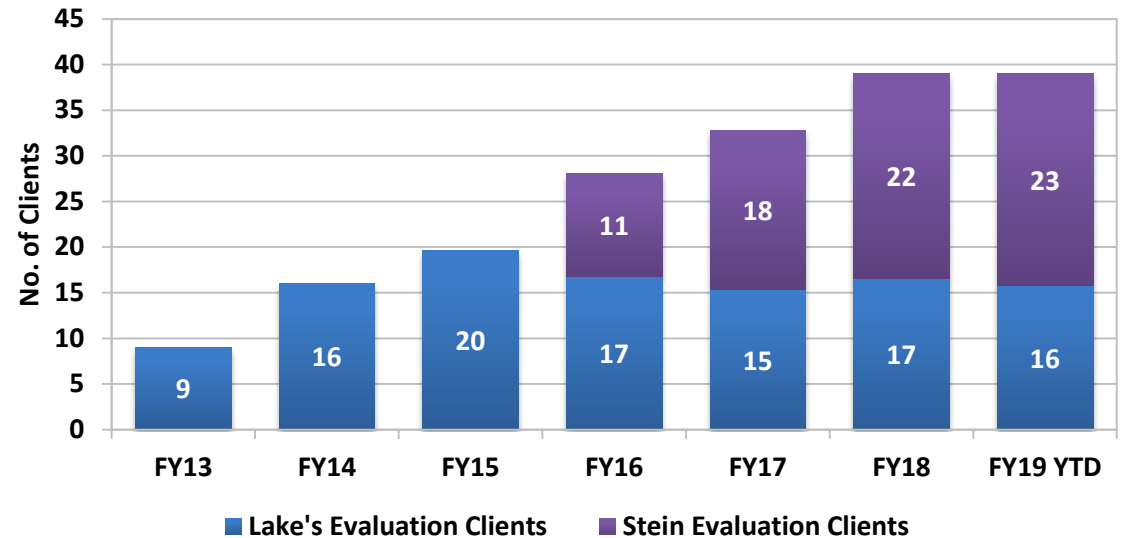
ADULT FORENSIC FACILITIES: EVALUATION CLIENTS

(DHHS Director's Office)

	Lake's Evaluation Clients	Lake's Average Length of Stay (Days)	Stein Evaluation Clients	Stein Average Length of Stay (Days)
Jul-16	14	58	12	71
Aug-16	17	28	13	144
Sep-16	20	87	16	86
Oct-16	17	88	17	75
Nov-16	15	122	21	70
Dec-16	13	88	23	66
Jan-17	13	88	22	87
Feb-17	14	158	15	102
Mar-17	19	31	16	96
Apr-17	18	53	15	75
May-17	13	98	20	72
Jun-17	11	183	20	127
Jul-17	12	151	23	64
Aug-17	9	62	22	75
Sep-17	14	62	17	98
Oct-17	15	60	19	88
Nov-17	16	86	23	63
Dec-17	15	76	25	100
Jan-18	16	69	25	64
Feb-18	18	14	22	130
Mar-18	22	89	19	70
Apr-18	21	98	21	110
May-18	20	31	26	141
Jun-18	21	100	27	61
Jul-18	18	120	27	86
Aug-18	16	98	26	93
Sep-18	15	60	24	110
Oct-18	14	127	16	89

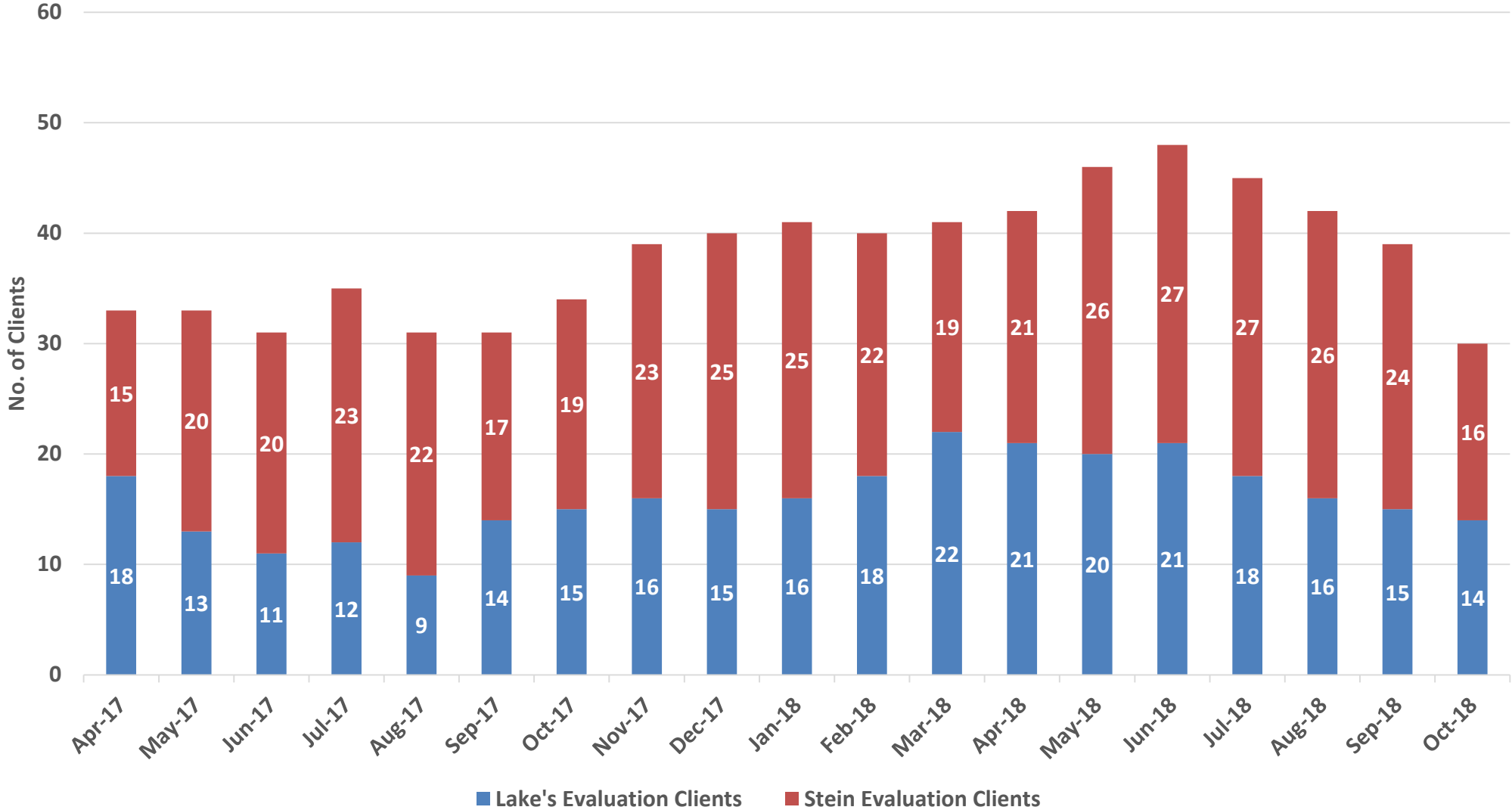
Fiscal Year Averages				
	Lake's Evaluation Clients	Lake's Average Length of Stay (Days)	Stein Evaluation Clients	Stein Average Length of Stay (Days)
FY13	9	98		
FY14	16	61		
FY15	20	94		
FY16	17	84	11	88
FY17	15	90	18	89
FY18	17	75	22	89
FY19 YTD	16	101	23	95

Evaluation Clients - Fiscal Year Averages



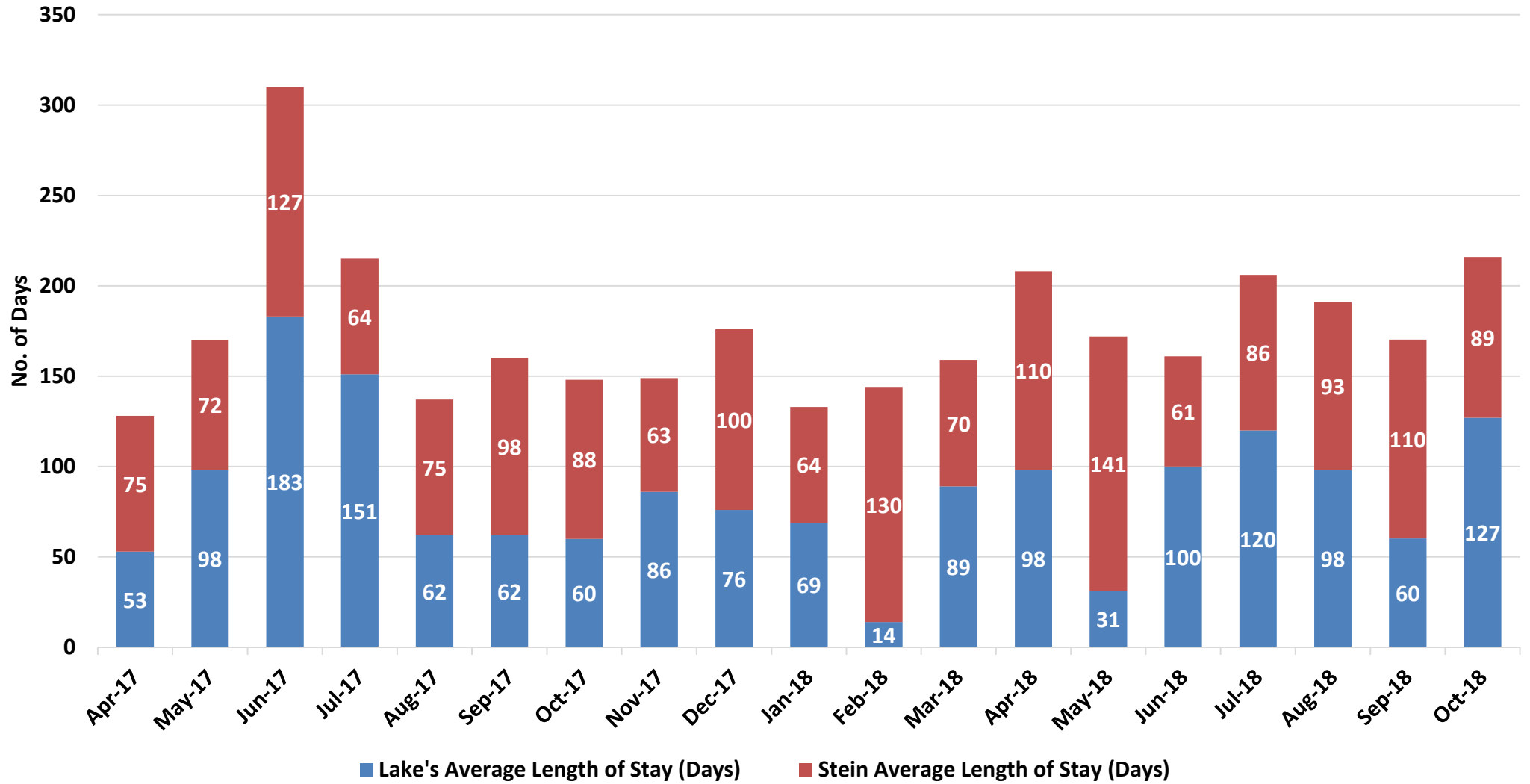


Adult Forensic Evaluation Clients





Evaluation Clients - Average Length of Stay (Days)





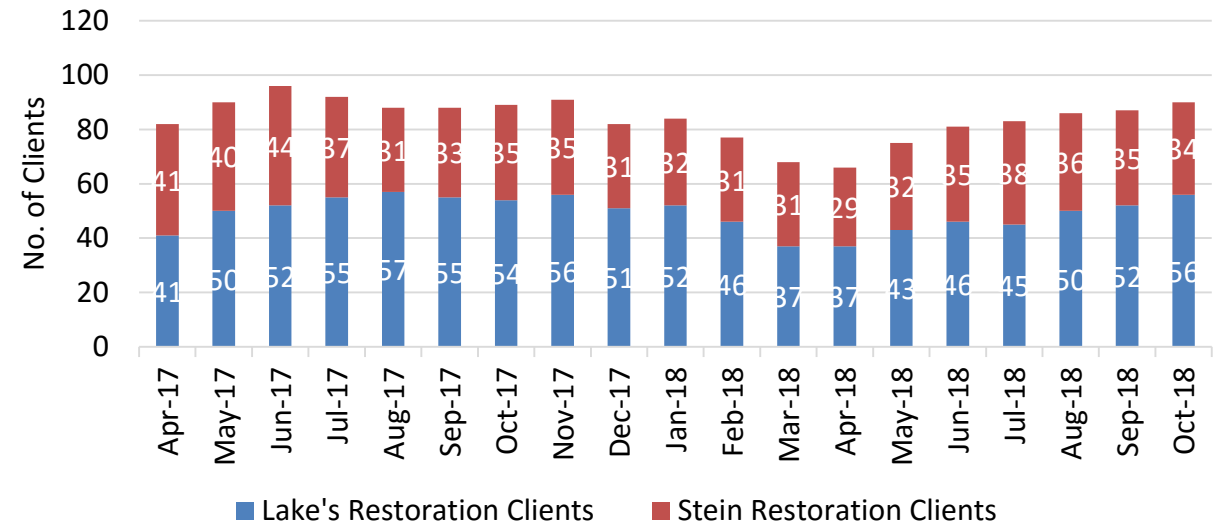
ADULT FORENSIC FACILITIES: RESTORATION CLIENTS

(DHHS Director's Office)

	Lake's Restoration Clients	Lake's Average Length of Stay (Days)	Stein Restoration Clients	Stein Average Length of Stay (Days)	Statewide Restoration Waitlist	Statewide Average Wait (Days)
Jul-16	45	62	44	98	15	6
Aug-16	45	100	41	104	16	4
Sep-16	44	102	42	86	17	4
Oct-16	44	118	40	84	20	5
Nov-16	47	106	40	120	14	5
Dec-16	52	113	37	117	14	4
Jan-17	49	116	39	115	22	5
Feb-17	48	105	47	105	16	4
Mar-17	44	76	44	94	12	6
Apr-17	41	110	41	137	21	4
May-17	50	93	40	87	25	6
Jun-17	52	64	44	114	29	6
Jul-17	55	117	37	83	19	4
Aug-17	57	101	31	120	17	5
Sep-17	55	72	33	101	23	5
Oct-17	54	87	35	98	17	5
Nov-17	56	115	35	68	14	6
Dec-17	51	93	31	98	16	4
Jan-18	52	119	32	94	15	7
Feb-18	46	125	31	75	9	6
Mar-18	37	110	31	81	10	4
Apr-18	37	82	29	82	12	5
May-18	43	119	32	122	18	4
Jun-18	46	66	35	104	17	4
Jul-18	45	102	38	55	22	3
Aug-18	50	100	36	70	16	5
Sep-18	52	93	35	69	16	6
Oct-18	56	106	34	60	17	5

Fiscal Year Averages						
	Lake's Restoration Clients	Lake's Average Length of Stay (Days)	Stein Restoration Clients	Stein Average Length of Stay (Days)	Statewide Restoration Waitlist	Average Wait (Days)
FY13	45	81				
FY14	48	96				
FY15	50	92				
FY16	49	108	32	88	17	24
FY17	47	97	42	105	18	5
FY18	49	101	33	94	16	5
FY19 YTD	51	100	36	64	18	5

Adult Forensic Restoration Clients



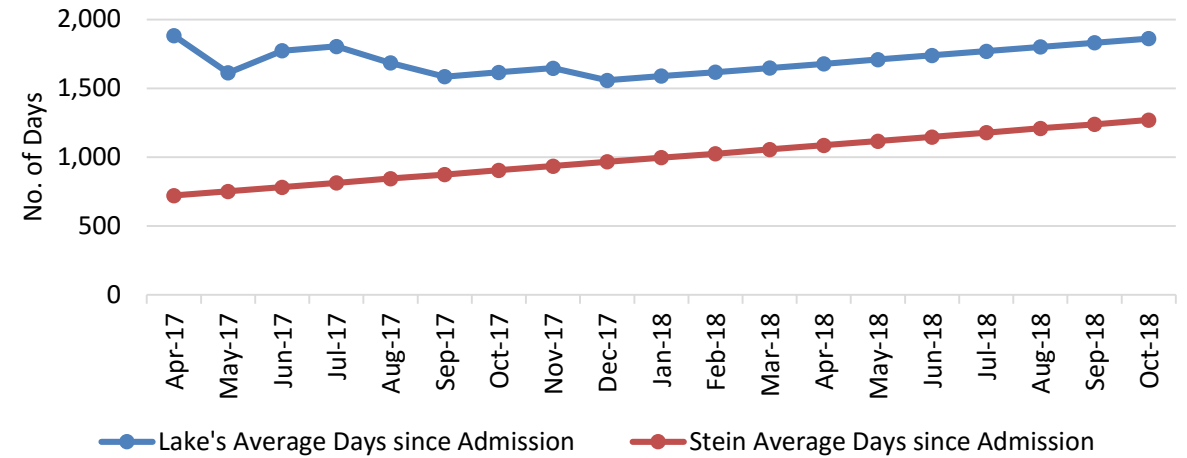


ADULT FORENSIC FACILITIES: LONG-TERM COMMITMENTS

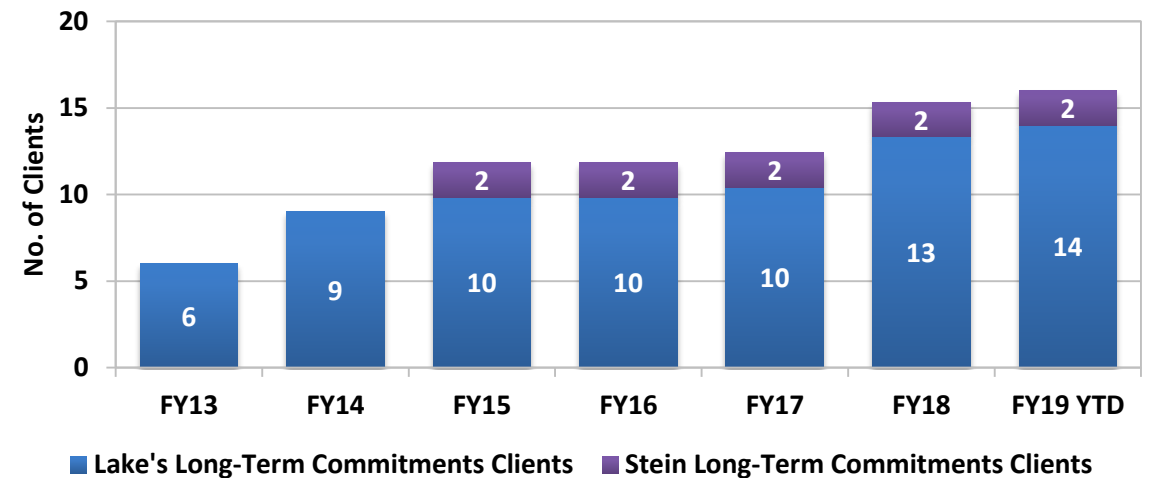
(DHHS Director's Office)

	Lake's Long-Term Commitments Clients	Lake's Average Days since Admission	Stein Long-Term Commitments Clients	Stein Average Days since Admission
Jul-16	10	1,610	2	448
Aug-16	10	1,641	2	479
Sep-16	10	1,671	2	509
Oct-16	10	1,702	2	540
Nov-16	10	1,732	2	570
Dec-16	11	1,606	2	601
Jan-17	11	1,637	2	632
Feb-17	11	1,665	2	660
Mar-17	10	1,853	2	691
Apr-17	10	1,883	2	721
May-17	11	1,613	2	752
Jun-17	11	1,773	2	782
Jul-17	11	1,804	2	813
Aug-17	12	1,685	2	844
Sep-17	13	1,585	2	874
Oct-17	13	1,616	2	905
Nov-17	13	1,646	2	935
Dec-17	14	1,558	2	966
Jan-18	14	1,589	2	997
Feb-18	14	1,617	2	1,025
Mar-18	14	1,648	2	1,056
Apr-18	14	1,678	2	1,086
May-18	14	1,709	2	1,117
Jun-18	14	1,739	2	1,147
Jul-18	14	1,770	2	1,178
Aug-18	14	1,801	2	1,209
Sep-18	14	1,831	2	1,239
Oct-18	14	1,862	2	1,270

Long Term Average Length of Stay (Days)

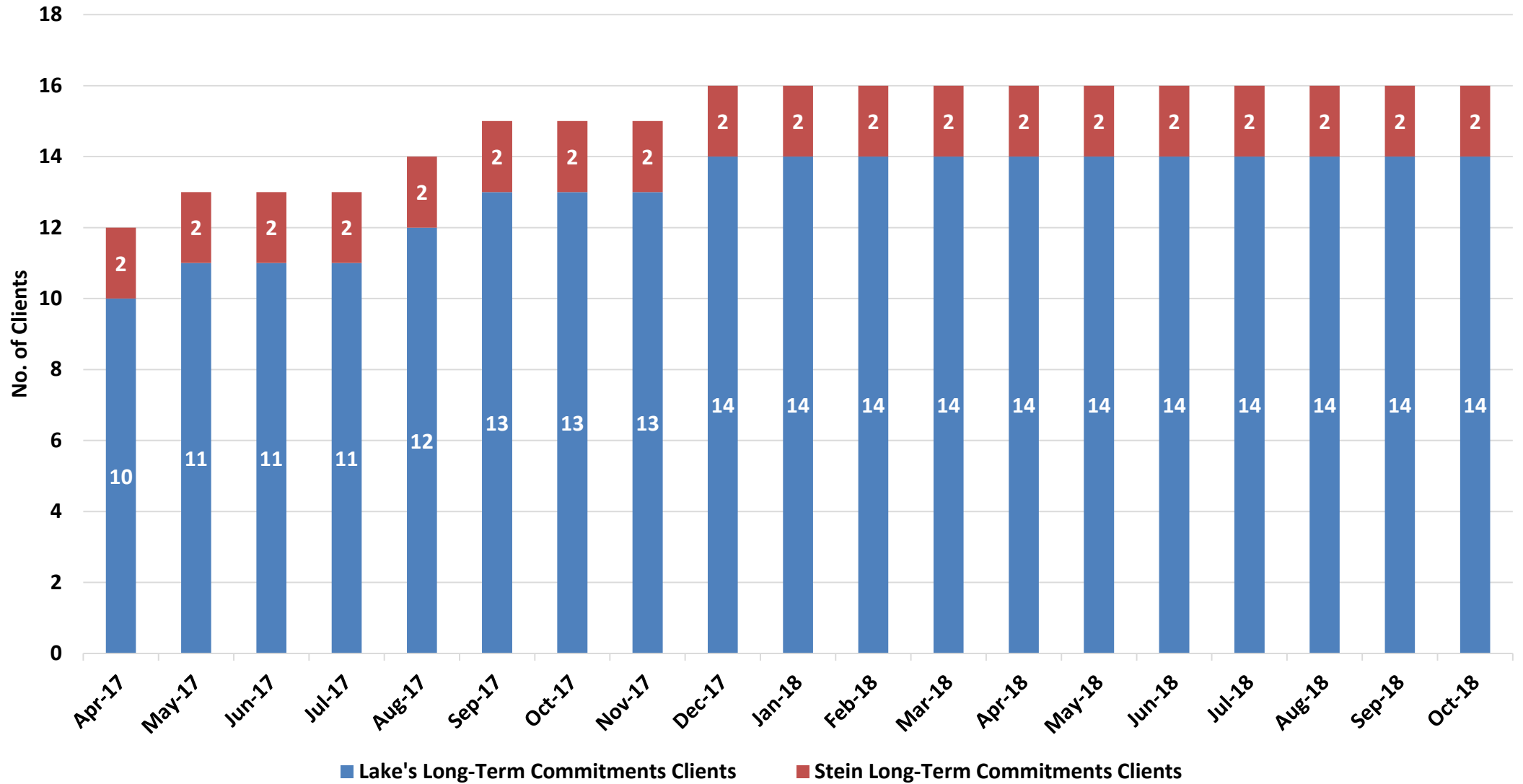


Long-Term Commitments - Fiscal Year Averages





Adult Forensic Long-Term Commitments





THANK YOU!

Joanne Malay, MPH, RN

jmalay@health.nv.gov

(702) 486-4400

Division of Public and Behavioral Health

State of Nevada